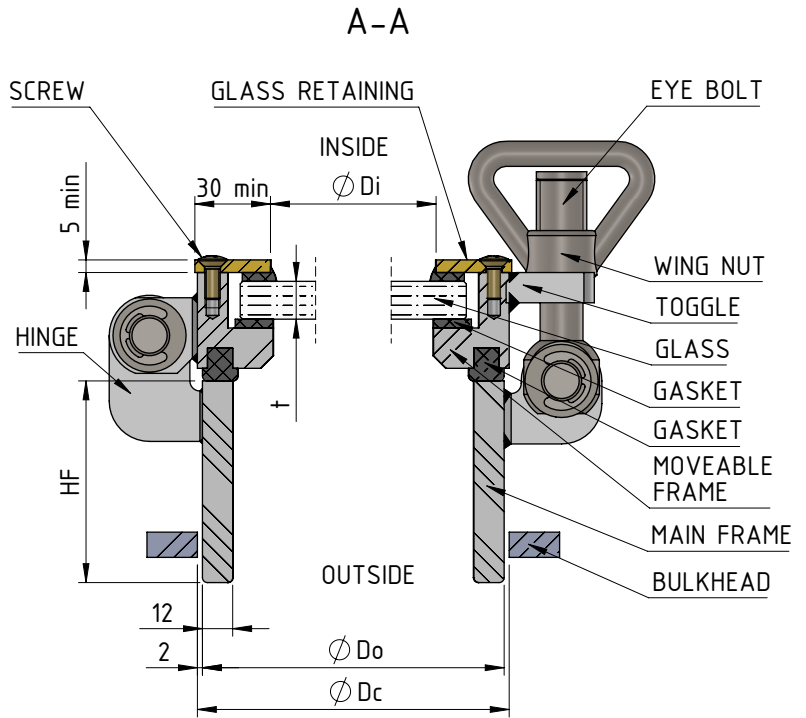
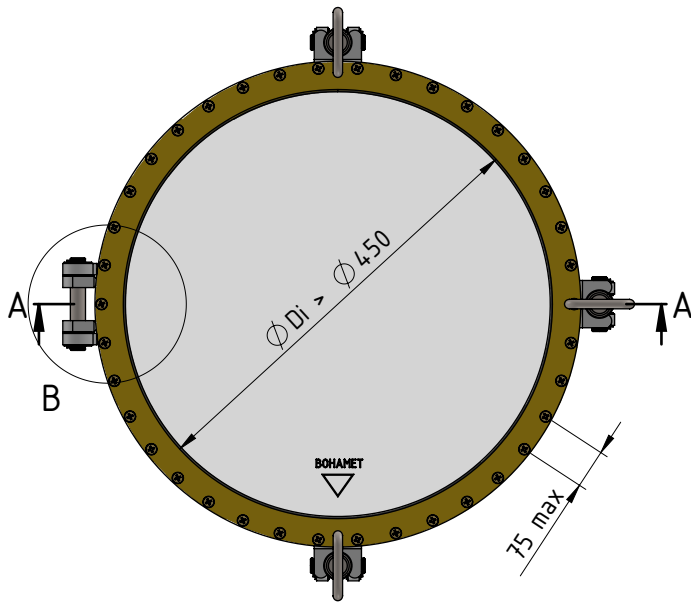


SIDE INWARD OPENING WINDOW FOR WELDING, CIRCLE

model: W-IL(R)W-F-CI



Hinge configurations:

MATERIALS CONFIGURATION								
MAIN FRAME	MOVEABLE FRAME				GLASS RETAINING		SCREWS	
	1	2	3	4	2	4*	2	4*
1	X	X	X	X	X	X	X	X
2	X	X	X	X	X	X	X	X
3	X	X	X	X	X	X	X	X
4	X	X	X	X	X	X	X	X

Not available for the aluminum moveable frame

- | | |
|------------------------------------|------------------------------------------------|
| 1. Steel (acc. to PN-EN10025): | S235JR; S355J2; A36; D36; E36 |
| 2. St. steel (acc. to PN-EN10088): | 1.4306 (304L); 1.4404 (316L); 1.4457 (316Ti) |
| 3. Alu. alloy (acc. to PN-EN755): | EN-AW 5754; EN-AW 5083; EN-AW 6063; EN-AW 6060 |
| 4. Brass (acc. to PN-EN12167): | CuZn37 |

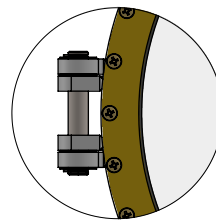
Available glass: single glass; laminated glass; tinted glass; heated glass; double glazed; triple glazed

Available single glass thicknesses: 6; 8; 10; 12; 15; 19; 25

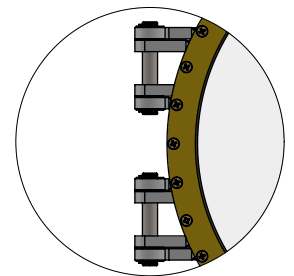
Available accessories for windows: S; D; R; W; C - see accessories TDS

For fireproof unit see separate TDS

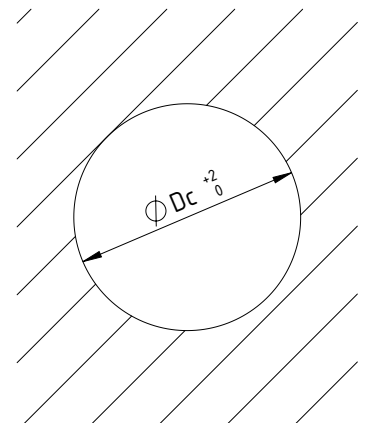
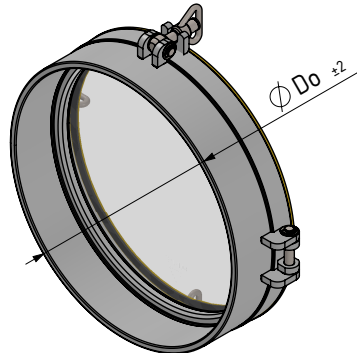
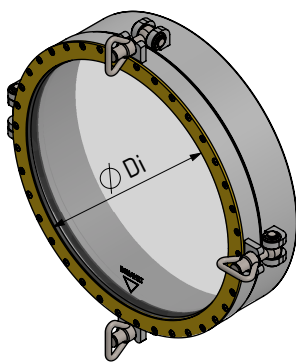
Detail B1
Single hinge for
 $\phi Di < \phi 700$



Detail B2
Double hinge for
 $\phi Di \geq \phi 700$



CUT-OUT
HOLE IN PLATE (HIP)



All dimensions are in mm